



HARDVOGUE

Plastic Film, Paper,
Adhesive material, Cardboard,
Foil lidding ,IML film



+16048180316

sales@hardvogueltd.com

www.hardvogue.com



Label And Functional Packaging Material Manufacture

Hardvogue is a leading manufacturer and supplier of high-quality raw materials for the printing industry, with a strong focus on the labels and packaging printing material. We offer plastic film, paper, adhesive material, cardboard, foil lidding and IML film.

BRIEF INTRODUCTION



BOPP film

1. IML Film (Injection Molding Label Film):

Types:

Orange Peel
Solid White
Transparent
Metallized
Holographic
3D Lenticular

Thickness:

60 / 65 / 70 / 80 / 90 / 150 mic

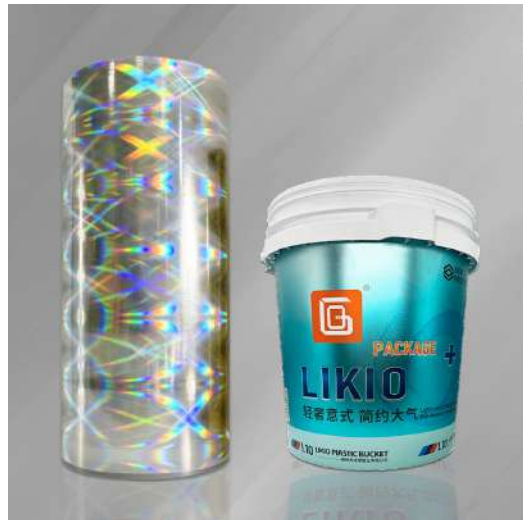
Feature:

1. Superior Print Quality: High-resolution images with sharp details
2. Durability & Resistance: Water, oil, and chemical-resistant properties
3. Seamless & Tamper-Resistant: The label becomes an integral part of the container.
4. Lightweight & Eco-Friendly: Supports recyclability and reduces material usage

Application:

IML

OUR PRODUCTS



2.Synthetic paper :

Thickness:

75/95/120/130/150mic

Application:

Self-adhesive labels
Hang tags and price tags
Maps, menus, and manuals
Outdoor posters, signs, and wrapping films
Labels for meat
Removable labels for wet wipes

Feature:

1. Waterproof & Tear-Resistant: Won't absorb water or tear easily.
2. Excellent Printability: Works with offset, flexo, screen, UV inkjet, and thermal transfer printing.
3. Smooth Surface: High opacity, bright whiteness, and great color reproduction.
4. Durable: Resistant to oil, grease, chemicals, and weather, perfect for outdoor use.
5. Recyclable: Can be recycled with other PP or PE materials.

OUR PRODUCTS



3.WAL Film (Wrap Around Label Film):

Types:

Pearlized, Transparent

Thickness:

35 / 38 / 40 mic

Application:

Beverage and food bottle labels



4.Lamination Film :

Features:

High transparency, optional heat-sealability, suitable for lamination

Application:

Laminated packaging, surface protection



5.Soft Touch Film :

Features:

Soft tactile feel, matte effect, anti-scratch

Application:

Premium packaging, book covers, labels



6.Heat-Sealable Film :

Features:

Low temperature sealing, strong seal strength, single- or double-sided sealable

Application:

Food and personal care packaging



PETg/PVC/POF/POS/R-PET/C-PET Shrink Film

Thickness:

35/40/45/50mic

Shrink rate:

50-80%

Color:

White/transparent/one side white and one side black/metallized

Features :

- 1.High Transparency and Gloss
- 2.Good Toughness and Impact Strength
- 3.Ease of Thermoforming and Processing
- 4.Good Chemical Stability
- 5.Food Safe: PETg materials generally meet food contact standards and can be used for food packaging.
- 6.Recyclability: Similar to other plastic materials, PETg can be recycled and reused, meeting environmental Packaging Industry Printing and Signage Medical Devices Electronics Thermoforming Applications protection requirements.

Application

Packaging Industry Printing and
Signage Medical Devices
Electronics Thermoforming
Applications

OUR PRODUCTS



Specialty Films

1. Silver Metallized Film :

Thickness:

Typically 12 – 40 microns

Features:

1. Metallic silver appearance
2. High reflectivity and premium look
3. Barrier properties against light and moisture
4. Good printability after surface treatment

Application:

Labels, packaging, gift wraps, decorative items



2. Holographic Film :

Thickness:

Typically 20 – 40 microns

Features:

1. Multi-dimensional holographic patterns
2. Strong visual impact and anti-counterfeit function
3. Can be transparent or metallized
4. Customizable patterns and rainbow effects

Application:

Security packaging, high-end labels, gift wraps, luxury packaging



3. 3D Lenticular Film :

Thickness:

Typically 100 – 300 microns (thicker than regular films)

Features:

1. Creates 3D depth, flip, zoom, or animation effects
2. Requires precise printing alignment
3. High transparency and optical clarity

Application:

Premium labels, advertising, promotional cards, packaging with 3D effects



4. Glitter Film :

Thickness:

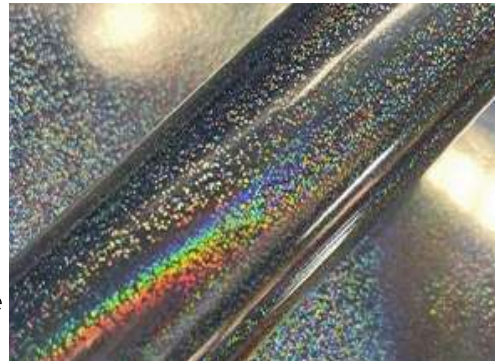
Typically 30 – 60 microns

Features:

1. Embedded glitter particles for sparkling effect
2. Available in multiple colors and sizes of glitter
3. Strong visual appeal for festive or promotional use

Application:

Decorative packaging, gift wraps, labels, stationery, party products



Metallized paper

Grams:

62/68/71/73/83/93/105gsm

Features :

Embossed / plain
Ink retentive /non ink retentive

Holographic pattern

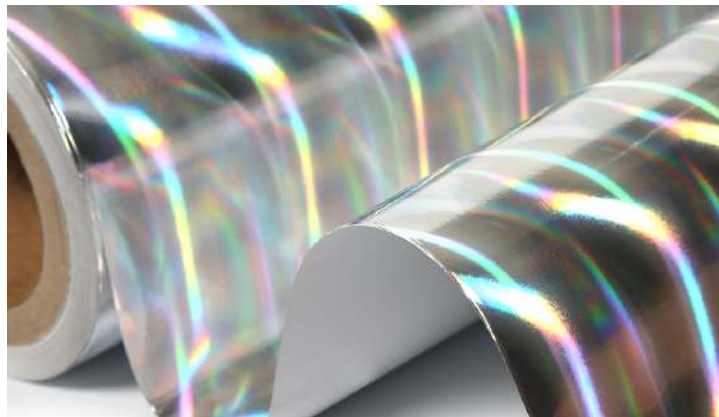
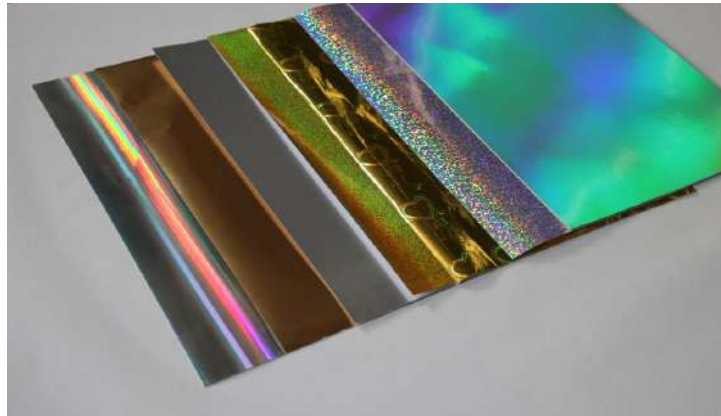
Product label Pharmaceutical label,Fruit label,Office print
Logistics and other industries
Food label
Beer labels
Wine labels
Beverage and wine, logistics and transport, retail



Holograph paper

Holographic pattern

Pillar of light
Rainbow
Broken glass



Coated Papers

1. C1S (Coated One Side):

Grammage:

Typically 80, 90 gsm

Features:

1. Smooth and glossy coating on one side
2. Uncoated reverse side for better glueability or writing
3. Good printability on the coated side

Application:

Packaging, labels, book covers, postcards



2. C2S (Coated Two Sides):

Grammage:

Typically 80, 90gsm

Features:

1. Glossy, matte, or silk coating on both sides
2. Excellent print quality and image reproduction
3. Higher opacity, smoothness, and brightness

Application:

Magazines, brochures, catalogs, posters, premium packaging



3. Cast Coated Paper (CCP):

Grammage:

Typically 80, 90 gsm

Features:

1. High gloss “mirror-like” surface finish
2. Produced by pressing the coated surface against a heated polished chrome drum
3. Excellent ink holdout and vibrant color reproduction

Application:

Premium labels, greeting cards, high-end packaging, art prints



Paperboard

1. CKB (Coated Kraft Back Board):

Grammage:

Typically 200 – 360 gsm

Features:

1. Top side coated, kraft back (brown)
2. High stiffness and strength
3. Good printability on coated side
4. Eco-friendly, recyclable

Application:

Food packaging, frozen food boxes, beverage carriers, pharmaceuticals



2. FBB (Folding Box Board):

Grammage:

Typically 180 – 450 gsm

Features:

1. Multi-layer structure (mechanical pulp core, chemical pulp surface)
2. High whiteness and smooth surface
3. Excellent printability and foldability
4. Lightweight but stiff

Application:

Cosmetics, pharmaceuticals, confectionery, luxury packaging



3. PE Coated Cardboard :

Grammage:

Baseboard + PE layer, total typically
200 – 450gsm

Features:

- 1.Cardboard laminated with PE (Polyethylene) layer
- 2.Provides moisture and grease resistance
- 3.Suitable for direct food contact
- 4.Heat-sealable

Application:

Cups, fast food packaging, frozen and liquid
food packaging



4. Water-based coated eco-friendly paper cup board :

Grammage:

Base cardboard + water-based coating
200 – 450gsm

Features:

- 1.Cardboard coated with water-based coating
- 2.Provides moisture and grease resistance
- 3.Suitable for direct food contact
- 4.Heat-sealable

Application:

Cups, fast food packaging, frozen and liquid
food packaging



Specialty Cardboard

1. Metallized Cardboard:

Grammage:

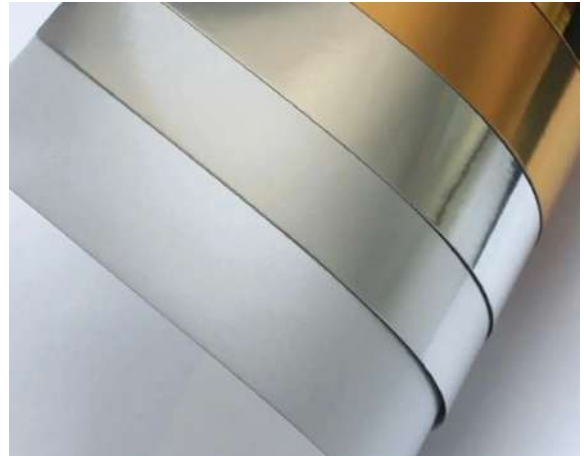
Typically 200 – 450 gsm

Features:

1. Paperboard laminated with a thin aluminum foil or metallized PET layer
2. Metallic silver or gold finish, high reflectivity
3. Good printability and compatibility with embossing, hot stamping, and varnishing
4. Provides barrier properties against moisture and light (depending on structure)

Application:

Premium packaging (cosmetics, electronics, liquor, confectionery), gift boxes, promotional displays



2. Holographic Cardboard:

Grammage:

Typically 200 – 450 gsm

Features:

Paperboard laminated with holographic PET film

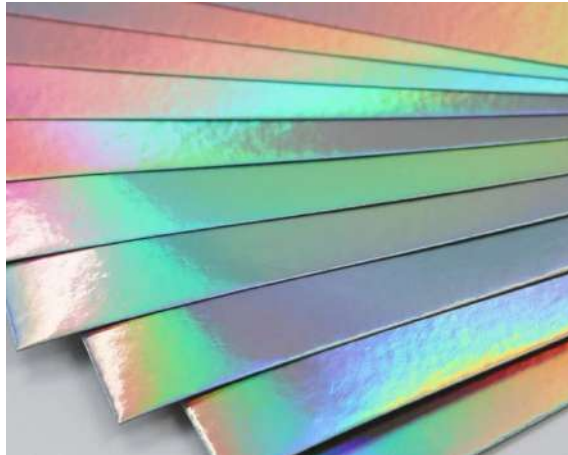
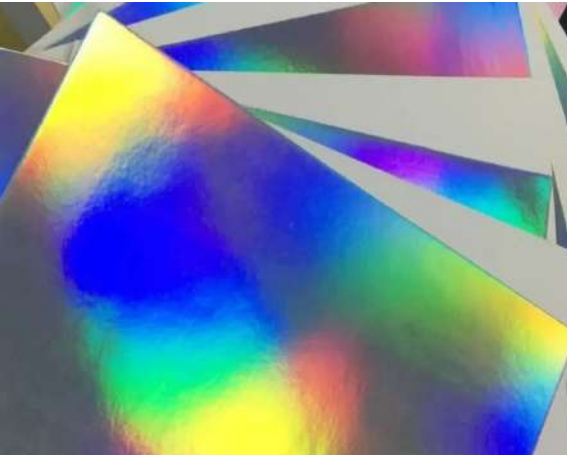
3D rainbow and multi-dimensional light reflection effects

Enhances shelf appeal and provides security/anti-counterfeit function

Can be combined with embossing, spot UV, and foil stamping for premium effects

Application:

Luxury packaging, anti-counterfeit labels, high-end gift boxes, promotional materials



OUR PRODUCTS

Adhesive Paper

Face Stock List

Cast coated paper
Wood free paper
Art paper(Semi glossy)Thermal paper
Kraft paper
Fluorescent paper
Fragile paper
Foil paper
Adhesive Wine Paper

Adhesive Type

Hotmelt adhesive
Water-based acrylic adhesive
Solvent adhesive

Application

Product label
Pharmaceutical label
Fruit label
Office print
Logistics and other industries
Food label
Beer labels
Wine labels
Beverage and wine, logistics and transport, retail



Adhesive Film

Face Stock List

PVC

PET

PP

PP Synthetic

PP Pearlized

Electrostatic film(static cling film)

Holographic film

Void material

Anti-fake synthetic film

Adhesive Type

Hot melt adhesive

Water-based acrylic adhesive

Low temperature adhesive

Application

Oil and chemical labeling

Personal care/Medicine labels

Tyre label

Cosmetic labels



Aluminum Lidding

Grammage:

Typically 20 – 40 microns (depending on application and lamination)

Types:

Plain aluminum foil

Printed aluminum lidding foil

Embossed foil

Laminated structures (e.g., Aluminum + PET / PE / Paper)

Easy-peel or heat-sealable grades

Features:

1. Excellent barrier against light, oxygen, moisture, and contamination
2. Heat-sealable to plastics like PS, PP, PET, and PVC
3. Option for easy-peel coating for consumer convenience
4. High-quality printability for branding and product information
5. Hygienic and food-safe, suitable for sterilization

Application:

Yogurt cups, dairy products

Ready-to-eat meals and frozen food trays

Pharmaceutical blister packs

Beverage and food containers requiring high barrier

OUR PRODUCTS



OUR PRODUCTS

IML (In-Mold Label)

Common thickness:

60 / 65 / 70 / 80 μm (other thicknesses customizable)

Application:

Label Type	Thickness (μm)	Applications
Color Change	60-80	Temperature-sensitive packaging, ice cream cups
Light Up	70-80	Beverage promotions, illuminated packaging
3D Embossed	70-80	Premium food pails, cosmetics, gift boxes
3D Lenticular	80-150	Toys, promotional packaging, special editions
Solid White	60-80	Yogurt cups, dairy, paint pails
Orange Peel	60-80	Household, lubricants, industrial products
Transparent	60-70	Clear food containers, seasoning jars
Holographic	70-80	Gift packs, holiday or cobrand promotions

General Processing & Adaptation

Printing methods: Offset / Flexo / Gravure (depending on coating and ink system)

Surface treatment: Corona ≥ 38 dyn; optional top-coating for improved ink adhesion and scratch resistance

Molding process: Primarily for Injection Molding IML; some types adaptable to Blow

Molding / Thermoforming

Supply form: Sheets or reels; gloss or matte finishes available





HARDVOGUE

Plastic Film, Paper,
Adhesive material, Cardboard,
Foil lidding, IML film

+16048180316

www.hardvogue.com

sales@hardvogueltd.com

